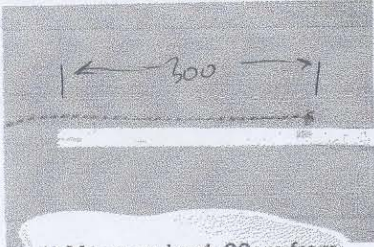


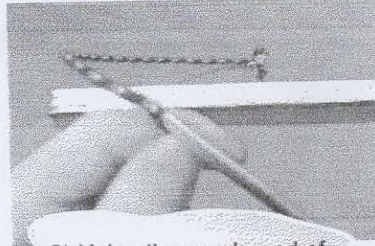
(Tools: 4mm Splicing Fid, whipping twine, needle, scissors or knife)

USE 4mm ROPE

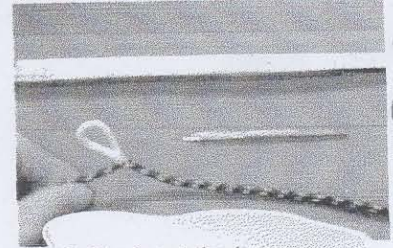
"EXCEL RACING" 2mm
FID
NEEDLES
PULL
NOT
PUSH.



1) Measure back 30cm from end of rope



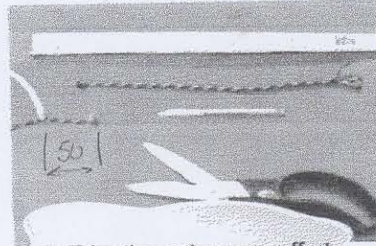
2) Using the spade end of the fid ease a gap in the outer braid.



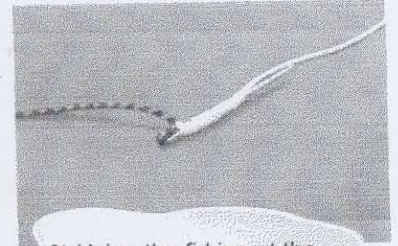
3) Pluck out the inner core.



4) Pull the inner core out.



5) Trim the outer core off at 25cm, leaving a 5cm tail.



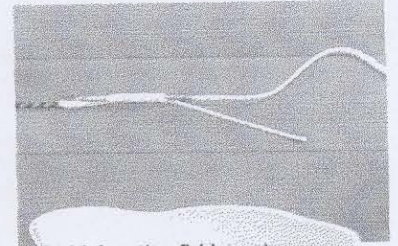
6) Using the fid insert the outer core tail inside the inner core.



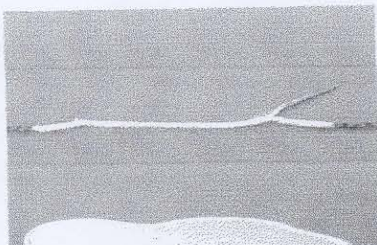
7) The rope is now tapered. Repeat the process at the other end of the rope.



8) Overlap the two inner cores and mark the centre.



9) Using the fid insert one core into the other.



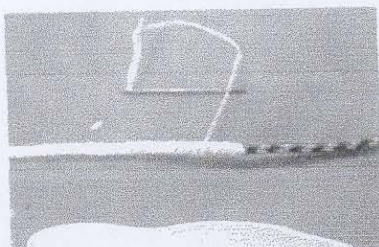
10) Trim any tails and milk back inside the cores.



11) Smooth down the length of the splice.



12) Place a locking stitch in the centre of the splice



13) Place two other locking stitches where the two outer cores were inserted.

The splice is strong enough to go anywhere in your kicker system. However the inner core is not as hard wearing as the outer therefore it is advisable to set up the kicker so the splice is not working through the cleat.